

Paslode Impulse IM350 / 90 Gas Strip Nailer



The Professionals Choice

With 20 years of gas experience the IM350 is the professional's choice for cordless first fix nailing applications. High performance gas technology without the need for compressors.

Product Advantages

- Cordless, self powered - no hoses, no compressors, no setting up time
- Versatile - drives 51 - 90mm Stainless Steel, Hot Dipped Galvanised, Galv Plus, Bright, Ring, Uni Lock or Straight nails (subject to nail type)
- Drives up to a maximum of 2 nails per second and 1,000 per hour
- Slim line user friendly battery pack
- Compact - advanced body design enables work in cramped, overhead and hard to reach places
- Tough - constructed from heavy duty, reinforced durable housing, guaranteed for five years
- Lightweight - centrally balanced body with textured "Sure Grip" handle
- Easy maintenance - solid state circuitry ensures dependability
- Sequential actuation - safe operation
- Tool free depth of drive adjustment - provides precise control of nail depth
- Integrated belt and rafter hook - easy access when not in use

Kit Contains

Paslode Impulse IM350 / 90 Gas Strip Nailer, high impact lightweight carry case, 2 x batteries as standard, battery charger, cleaning solution, Impulse lubricant, safety glasses to EN166:F, allen key and instruction manual

Substrates

- Wood

Applications

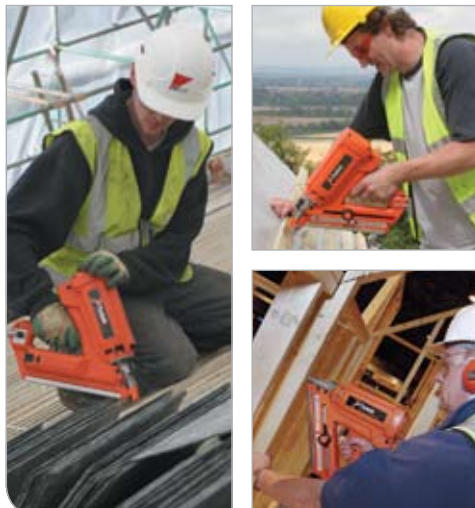
- Timber frame
- Floor boarding
- Roof battening
- Decking
- Flat roofing
- Chipboard
- Shuttering
- Cladding
- Joists
- Noggins
- Soffits
- Refurbishment
- Panelling
- Fencing
- Packaging

Tool Specification

Weight	3.1kg
Dimensions	368 x 300 x 100mm
Nail range	51mm to 90mm
Cycle rate	3 nails per second
Maximum cycle rate	1,000 nails per hour 4,000 per day
Magazine capacity	55 nails
Fuel cell life	Approx 1,100
Battery	Approx 4,000 fixings per charge
Charger 230 volt	Maximum charge time of 2 hours

Fastener Specification

Coatings / Materials / Finishes	Stainless Steel Hot Dipped Galv Galv Plus Bright
Shank Types	Ring Shank 2.8 / 3.1mm Uni Lock 3.1mm Smooth Shank 3.1mm
Point Types	Diamond Point
Head Types	Clipped Head
Collation Types	ProStrip - paper collated nail provide high holding power and ease of drive. Nail strips will not break when dropped and will not deteriorate in wet weather. No collation material is left on site.



Paslode Impulse IM350 / 90 Gas Strip Nailer

Eurocode	Description	Box Qty
085010	IM350 / 90 CT Strip Nailer	1

Product Range - Nail and Fuel Packs

Eurocode	Length	Nail Diameter	Shank Type / Finish	Fuel Cells	Box Qty
141202	51mm	2.8mm	RG BR	3	3,300
141204	51mm	2.8mm	RG Galv Plus	3	3,300
141206	57mm	2.8mm	RG Galv Plus	3	3,300
141208	63mm	2.8mm	RG BR	3	3,300
141210	63mm	2.8mm	RG Galv Plus	3	3,300
141211	63mm	2.8mm	RG HDGV	3	3,300
141221	63mm	3.1mm	RG Galv Plus	2	2,200
141222	63mm	3.1mm	RG HDGV	2	2,200
141226	75mm	3.1mm	RG BR	2	2,200
141227	75mm	3.1mm	RG Galv Plus	2	2,200
141228	75mm	3.1mm	RG HDGV	2	2,200
141229	75mm	3.1mm	UNI HDGV	2	2,200
141233	90mm	3.1mm	ST BR	2	2,200
141234	90mm	3.1mm	ST Galv Plus	2	2,200
141235	90mm	3.1mm	ST HDGV	2	2,200
141236	90mm	3.1mm	UNI HDGV	2	2,200

Product Range - Handy Packs

Eurocode	Length	Nail Diameter	Shank Type / Finish	Fuel Cells	Box Qty
141256	51mm	2.8mm	RG Galv Plus	1	1,100
141258	63mm	2.8mm	RG BR	1	1,100
141259	63mm	2.8mm	RG Galv Plus	1	1,100
141260	63mm	2.8mm	RG HDGV	1	1,100
141263	63mm	3.1mm	RG Galv Plus	1	1,100
141264	63mm	3.1mm	RG HDGV	1	1,100
141265	75mm	3.1mm	RG HDGV	1	1,100
141267	90mm	3.1mm	ST HDGV	1	1,100

Product Range - Stainless Steel Range

Eurocode	Length	Nail Diameter	Shank Type / Finish	Fuel Cells	Box Qty
141261	63mm	2.8mm	RG S / Steel	1	1,100
141257	51mm	2.8mm	RG S / Steel	1	1,100
141266	80mm	3.1mm	RG S / Steel	1	1,100

NEW Improved Paslode Impulse IM65A F16 Angled Gas Brad Nailer



The NEW Improved IM65A F16 Brad Nailer

A distinctive angled magazine designed specifically for working in tight spaces and corners. The tool benefits from a small, light shell, nail lockout, excellent depth of drive adjuster and easy jam clearance. Now supplied with two batteries for the same great price.

Product Advantages

- Powerful motor - Drives 32 - 63mm brads
- Mini fuel cell - Drives up to 1,000 brads per cell
- Compact design - Allows for easy access
- Comfortable handle and soft trigger
- Sequential operation - 2 - 3 brads per second for limited periods, normal firing rate is up to 1,000 brads per hour
- No-mar contact with sight lines - For accurate placement and reduced damage to wood
- Angled magazine - Ease of use in tight corners
- Tool free depth of drive adjustment - Provides precise control of nail depth
- Quick clear nose cover - Easy access in the unlikely event of a jam
- Rear load magazine - Easy nail loading, holding 2 strips of brads (100 brads)
- Nail Lockout - Preventing blank firing and minimises wood damage
- Reversible belt hook - Easy access when not in use

Kit Contains

Paslode Impulse IM65A F16 Angled Gas Brad Nailer, high impact lightweight carry case, 2 x batteries as standard, battery charger, cleaning solution, Impulse lubricant, safety glasses to EN166:F, allen key and instruction manual

Substrates

- Wood
- MDF and similar substrates

Applications

- Door stops
- Tongue and groove panelling
- Architraves
- Window casing
- Dado rail
- Skirting boards
- Beading
- Stair rails
- MDF fixing

Tool Specification

Weight	2.3kg
Dimensions	292 x 272 x 90mm
Brad range	32mm to 63mm
Cycle rate	2 / 3 brads per second
Maximum cycle rate	1,000 per hour 4,000 per day
Magazine capacity	100 brads
Fuel cell life	Approx 1,000 brads
Battery	Approx 4,000 fixings per charge
Charger 230 volt	Maximum charge time of 2 hours

Fastener Specification

Coatings / Materials / Finishes	Galvanised
Brad Gauge	F16 Wire size 1.65mm
Point Types	Diamond Point
Head Types	Lost Head
Collation Types	Glued



NEW Improved Paslode Impulse IM65A F16 Angled Gas Brad Nailer

Eurocode	Description	Box Qty
013311	IM65A F16 Angled Brad Nailer	1

Product Range - Angled Brad and Fuel Packs for IM65A F16 and IM250A

Eurocode	Gauge	Length	Finish	Fuel Cells	Box Qty
300270	F16	32mm	Galv	2	2,000
300271	F16	38mm	Galv	2	2,000
300272	F16	45mm	Galv	2	2,000
300273	F16	51mm	Galv	2	2,000
300274	F16	63mm	Galv	2	2,000

Product Range - Angled Brads Without Fuel Cells for IM65A F16 and IM250A

Eurocode	Gauge	Length	Finish	Fuel Cells	Box Qty
650230	F16	32mm	Galv	0	2,000
650231	F16	38mm	Galv	0	2,000
650046	F16	45mm	Galv	0	2,000
650047	F16	51mm	Galv	0	2,000
650232	F16	63mm	Galv	0	2,000

NEW Paslode Impulse IM65 F16 Gas Brad Nailer



The NEW IM65 F16

A 16 gauge straight Brad Nailer. The professionals choice, it features a smaller, lighter shell with nail lockout, improved depth of drive and easy jam clearance. Now supplied with two batteries for the same great price.

Product Advantages

- Reduced weight and excellent balance - Ergonomically designed to reduce arm fatigue to operator
- Powerful motor - Drives 16 - 63mm brads
- Comfortable handle and soft trigger
- Sequential operation - 2 - 3 brads per second for limited periods, normal firing rate is up to 1,000 brads per hour
- Compact design - Allows for easy access
- Quick clear nose cover - Easy access in the unlikely event of a jam
- With 2 batteries as standard - 4,000 brads per charge
- No-mar contact with sight lines - For accurate placement and reduced damage to wood
- Tool free depth of drive adjustment - Provides precise control of nail depth
- Mini fuel cell - Drives up to 1,000 brads per cell
- Nail Lockout - Preventing blank firing and minimises wood damage
- Rear load magazine - Easy nail loading, holding 2 strips of brads (100 brads)
- Reversible belt hook - Easy access when not in use

Kit Contains

Paslode Impulse IM65 F16 Gas Brad Nailer, high impact lightweight carry case, 2 x batteries as standard, battery charger, cleaning solution, Impulse lubricant, safety glasses to EN166:F, allen key and instruction manual

Substrates

- Wood
- MDF and similar substrates

Applications

- Door stops
- Tongue and groove panelling
- Architraves
- Window casing
- Dado rail
- Skirting boards
- Beading
- Stair rails
- MDF fixing

Tool Specification

Weight	2.3kg
Dimensions	299 x 267 x 90mm
Brad range	16mm to 63mm
Cycle rate	2 / 3 brads per second
Maximum cycle rate	1,000 per hour 4,000 per day
Magazine capacity	100 brads
Fuel cell life	Approx 1,000
Battery	Approx 4,000 fixings per charge
Charger 230 volt	Maximum charge time of 2 hours

Fastener Specification

Coatings / Materials / Finishes	Stainless Steel Galvanised
Brad Gauge	F16 Wire size 1.65mm F14 Wire size 2.0mm
Point Types	Diamond Point
Head Types	Lost Head
Collation Types	Glued



NEW Paslode Impulse IM65 F16 Gas Brad Nailer

Eurocode	Description	Box Qty
013321	IM65 F16 Brad Nailer	1

Product Range - F16 Brad Fuel Packs for IM65 F16 and IM250

Eurocode	Gauge	Length	Finish	Fuel Cells	Box Qty
921585	F16	16mm	Galv	2	2,000
921586	F16	19mm	Galv	2	2,000
921587	F16	25mm	Galv	2	2,000
921588	F16	32mm	Galv	2	2,000
921589	F16	38mm	Galv	2	2,000
921590	F16	45mm	Galv	2	2,000
921591	F16	50mm	Galv	2	2,000
921592	F16	63mm	Galv	2	2,000

Product Range - F16 Brad Fuel Packs Stainless Steel for IM65 F16 and IM250

Eurocode	Gauge	Length	Finish	Fuel Cells	Box Qty
921593	F16	25mm	S / Steel	2	2,000
921594	F16	38mm	S / Steel	2	2,000
921595	F16	50mm	S / Steel	2	2,000
921596	F16	63mm	S / Steel	2	2,000

Product Range - Brad Fuel Packs for use with F14 Conversion Kit - IM250 only (See Impulse Accessories)

Eurocode	Gauge	Length	Finish	Fuel Cells	Box Qty
921364	F14	32mm	Galv	3	2,500
921365	F14	38mm	Galv	3	2,500
921366	F14	50mm	Galv	3	2,500